

Panda

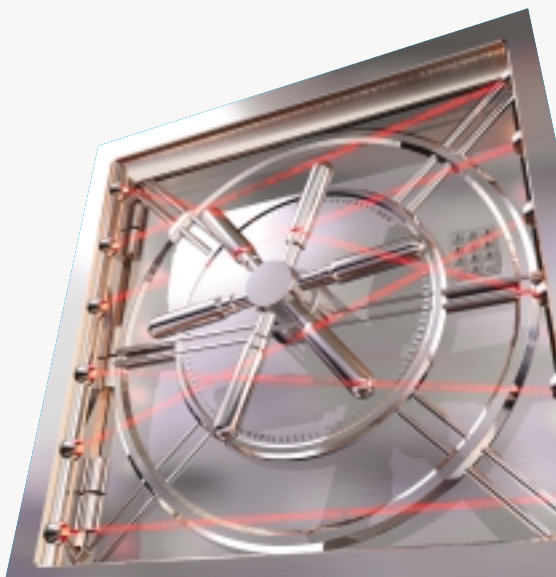
# DesktopSecure

for Linux



## Quick Start Guide

Follow the steps in this guide  
to benefit from all the protection  
**Panda DesktopSecure for Linux** offers.





# Installation

This is a brief guide to help you install Panda DesktopSecure for Linux. It is recommendable to follow the steps in this guide in order to complete installation correctly.

## START INSTALLATION

1. Get the *DesktopSecure.sh* installation file provided by Panda Software from CD 2, the blue CD, or from the downloads area of the website.
2. Copy the file to the computer to protect.
3. If you have antivirus protection installed, completely uninstall it before installing Panda DesktopSecure for Linux. Two antivirus solutions installed on the same computer could be incompatible.



*Note: Each program installed and each distribution has its own uninstallation method.*

4. Start the installation wizard using one of the following methods:
  - a. In a terminal, run:

```
/[installer path]/DesktopSecure.sh
```

If the installer requires run permissions, run the following command:

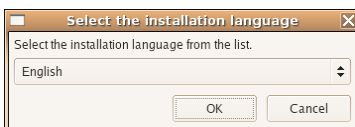
```
chmod a+x /[installer path]/DesktopSecure.sh
```

- b. In the graphic interface, double-click on the installer icon. If you need run permissions, right-click on the installer and enable these permissions through **Properties > Permissions**.
5. Enter the *root* password when prompted by the installer.

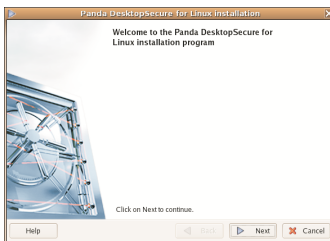


# Installation


6. Select the language in which to install Panda DesktopSecure for Linux.



7. The program shows the welcome window. Click on **Next** to continue with installation.

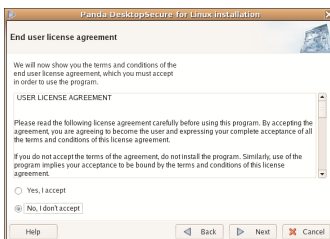


8. Panda DesktopSecure for Linux checks that your computer meets the requirements for installing the program.

 **Note:** *If your computer does not meet the minimum requirements or if your Linux distribution is not currently supported by the standard installation process, Panda DesktopSecure for Linux will specify the action to take.*

Click on **Next** to continue with installation.

9. The license agreement is displayed. Click on **Yes** to accept the terms of the agreement. If you click on **No** the installation process will not continue.



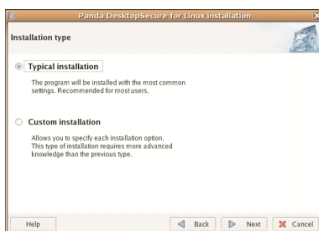


# Installation

## 10. Select the installation type.

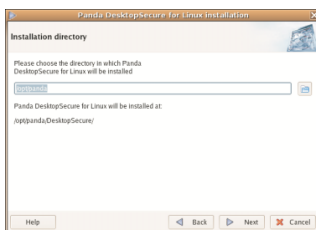


**Note:** This guide explains typical installation of Panda DesktopSecure for Linux. If you have more advanced knowledge and would like to configure each of the options, you can do this by selecting the option, **Custom installation** during the installation process.

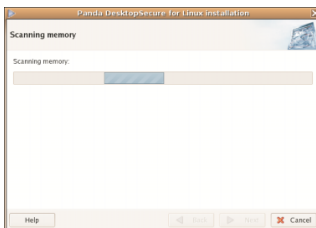


Keep the Typical installation option selected to install the most usual components of Panda DesktopSecure for Linux and click on **Next** to continue.

## 11. In this window you can modify the default installation folder. However, it is not recommendable to change it. To do this, click on **Browse...** and select the directory.



## 12. Panda DesktopSecure for Linux automatically scans the memory to ensure the program is installed in a virus-free environment. When this scan is complete, you will see a report of any malicious software detected and the action taken with each malicious code.

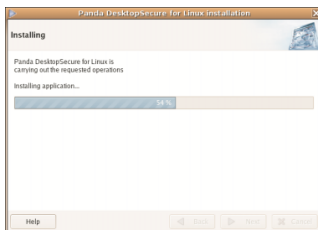


Click on **OK**.

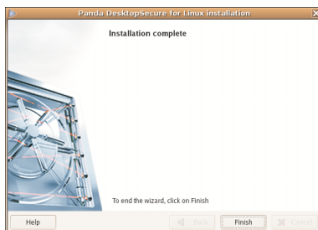


# Installation

Panda DesktopSecure for Linux copies the files needed to install the different types of protection against malicious software and the firewall.



13. Installation is complete. It is recommendable restart the computer now to activate the protection. Click on **Finish** to complete the process.






# Configuring updates


Panda DesktopSecure for Linux detects an open Internet connection. Configure the updates for the program to update automatically, and keep an optimum level of protection.

Follow the steps below to configure the automatic updates:

1. Click on **Settings** in the main window in Panda DesktopSecure for Linux.
2. Click on **Automatic updates settings**.

 **Warning:** *To change the settings, you need to enter the `root` password.*

Enter the username and password provided by Panda Software in the **User ID** section.

 **Note:** *You can use the **Check data** option to check that the username and password you have entered are **correct** (you need an Internet connection).*



## Self-diagnosis and scanning

After installing Panda DesktopSecure for Linux, you should carry out a self-diagnosis (an analysis of the program status), which will tell you the status of your computer's protection.

To do this, follow the steps below:

1. Right-click on the Panda DesktopSecure for Linux icon in the application icons zone.
2. Select **Start self-diagnosis**. The self-diagnosis is run immediately and a pop-up message informs you of the current status of the protection. If the level of protection is medium or low, the program suggests actions to take in order to reach an optimum level of protection.



*Note: A high protection level notice indicates that your computer is adequately protected.*

To carry out a full scan of your computer, follow the steps below:

1. Go to the **Scan** menu.
2. Click on **Scan all My Computer**. The scan will start.



# Uninstalling Panda DesktopSecure for Linux

Follow the steps below to uninstall Panda DesktopSecure for Linux:

1. Go to the start menu in the window manager.
2. Click on **Panda DesktopSecure for Linux**.
3. Click on **Uninstall Panda DesktopSecure for Linux**.
4. Enter the `root` password.
5. Panda DesktopSecure for Linux shows the welcome window. Click on **Next** to continue with the uninstallation process.
6. Click on **Finish**.





# Overview of Panda DesktopSecure for Linux

Panda DesktopSecure for Linux is an advanced security solution that will allow you to enjoy the Internet with no worries about the growing number of threats that appear day after day.

Right-click on the program icon in the *system tray* and select **Open Panda DesktopSecure for Linux**. This opens the main program window.

Here you can see the status of each of the different protection functions. Below you'll find a brief description of each of these functions. For more information on any of them, refer to the **Help**.

## Updates

The automatic updates of Panda DesktopSecure for Linux are carried out every day. These updates involve the renewal of a file belonging to the program, the *virus and malware signature file*, which allows the program to recognize all known viruses and threats and keep your computer protected against them.

You can carry out manual updates of the program, enable or disable the automatic updates and define the characteristics of both kinds of updates.

## Protection against known threats

Panda DesktopSecure protects your computer permanently against thousands of viruses and other Internet threats.

## Protection against unknown threats

Panda DesktopSecure for Linux detects unknown threats and protects your computer against potentially dangerous unknown threats.



# Overview of Panda DesktopSecure for Linux

## Firewall protection

The personal firewall blocks unauthorized access to your computer from the Internet (or network), or from your PC to the Internet.

When a program on your computer tries to access the Internet (or vice versa) without authorization, Panda DesktopSecure for Linux will warn you about this and give you the option to allow or deny this action.

## Help

In the top right of the main program window there is a question mark. Clicking on this, and then on the option Panda DesktopSecure for Linux Help, will take you to extensive and detailed help about all aspects of the program.

## Frequently asked questions (FAQs)

In the program Help file you will find a section with the questions most frequently asked by other users and the answers from our technical support personnel.



## Panda Software services

When you click on the **Services** button in the main program window, you will see the **Services available to registered users**.

### Updated documentation online

In the **Downloads** area of Panda Software's website (<http://www.pandasoftware.com/downloads/Documents/Documentation/default.htm>) you can download all the documentation that accompanies the product.

### Internet Tech support

To answer the most common questions about Panda DesktopSecure for Linux, there is a special tech support area ([www.pandasoftware.com/support](http://www.pandasoftware.com/support)), where you will find the information you need to resolve your questions.

### Suggestion box

Your opinion is very important to us! This service allows you to directly contact Panda Software, sending us any ideas, comments or suggestions that you may have for improving Panda DesktopSecure for Linux, the services that it includes, or any other matter.

### Send suspicious files to PandaLabs

If the scan detects files that it considers suspicious, they could be affected by a new virus or threat. In this case, send them to us. Panda Software will rapidly send you a solution, free of charge, or certification that the files are in perfect condition!



## Panda Software services

### List of detectable viruses and threats

This option allows you to get detailed information about viruses and other Internet threats.

### Security Info area of the website

If you click on this link you will have more real-time information and resources to help you stay out of the reach of viruses and other threats: Global ThreatWatch, repair utilities, etc.

---

**Panda Software and the Panda logo are registered trademarks owned by Panda Software. Other product names may be registered trademarks belonging to their respective owners.**

---





© Panda Software 2006  
0506-DSLGC-USA-02