

GateDefender Integra



GateDefender Integra 100



GateDefender Integra 300

General features

Operation mode	Transparent Bridge & Router	Transparent Bridge & Router
Web-based console with remote access	✓	✓
System load viewer	✓	✓
Viewing of each protection activity	✓	✓
Customizable reports and alerts	✓	✓
Graphic activity reports	✓	✓
Updates of databases and signature files	Every 90 minutes	Every 90 minutes
Number of network nodes	100	250
Centralized monitoring	SNMP and Syslog	SNMP and Syslog
Time synchronization	NTP	NTP

Firewall

Firewall: throughput	330 Mbps	850 Mbps
Concurrent connections	350.000	550.000
NAT-based policy	✓	✓

VPN

Dedicated tunnels	unlimited	unlimited
Encryption method	3DES, AES, Blowfish, Twofish, Serpent	3DES, AES, Blowfish, Twofish, Serpent
Support	Hub and spoke	Hub and spoke
Services	PPTP, L2TP, IPSec, SSL	PPTP, L2TP, IPSec, SSL
Validation with Radius servers	✓	✓

IPS/IDS

IPS attacks	+ 4500	+ 4500
Real-time automatic updates	✓	✓

Anti-malware

Protocols scanned	HTTP, FTP, SMTP, POP3, IMAP4 and NNTP.	HTTP, FTP, SMTP, POP3, IMAP4 and NNTP.
Viruses, Worms, Trojans, dialers and jokes	✓	✓
Spyware and phishing	✓	✓
Unknown threats	✓	✓
Vulnerabilities	✓	✓
Hacking tools	✓	✓
HTTP Throughput	40 Mbps	80 Mbps
SMTP Performance	80 messages /sec	160 messages /sec

Content Filter

Filtering of transport protocols	HTTP and FTP	HTTP and FTP
Filtering of mail and news protocols	SMTP, POP3, IMAP4 and NNTP	SMTP, POP3, IMAP4 and NNTP
Separate actions for inbound and outbound traffic	✓	✓
Scanning of nested messages and their attachments	✓	✓

File filtering

With multiple or truncated extensions	✓	✓
With macros or passwords	✓	✓
Suspicious compressed files	✓	✓
ActiveX controls or Java Applets	✓	✓

Message filtering

By textual content with pattern search	✓	✓
Nested	✓	✓
Malformed or fragmented	✓	✓

Anti-spam

Protocols scanned	SMTP, POP3 and IMAP4	SMTP, POP3 and IMAP4
Scan quality	Over 300,000 algorithms	Over 300,000 algorithms
Filter types	Bayesian, heuristic, machine learning, etc.	Bayesian, heuristic, machine learning, etc.
Configurable sensitivity level	Yes (High, Medium or Low)	Yes (High, Medium or Low)
Different actions for 'Spam' and 'Probable spam'	✓	✓
Different quarantine for 'Spam' and 'Probable spam'	✓	✓
Customizable white list and black list	Yes (IP, domain and address)	Yes (IP, domain and address)

Web filtering

URL filtering by category	More than 60 categories	More than 60 categories
Customizable white list and black list	✓	✓
List of VIP users excluded from filtering	✓	✓

Hardware specifications

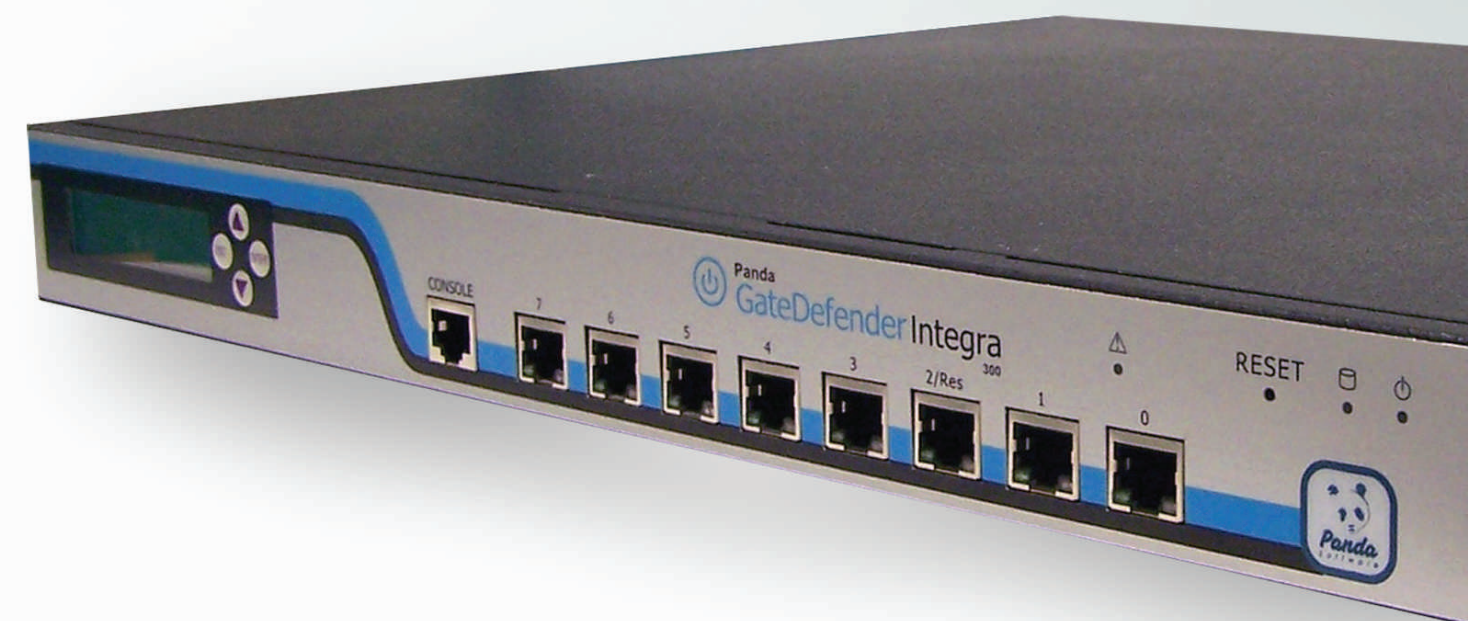
Ports	4 x 10/100/1000	8 x 10/100/1000
Microprocessor	Intel Pentium IV 2.0GHz	Intel Pentium IV 3.4GHz
RAM:	512 MB	1 GB
Hard disk:	40 GB	80 GB
Measurements (mm)	350 x 246 x 7.66	429 x 382 x 44
Weight	5.2 kg / 11.45 lbs	11.1 kg / 24.47 lbs
Form Factor	1.6U Rackmount	1U 19" Rackmount
Certifications	CE / FCC	CE / FCC
Operating temperature	5°C - 40°C	5°C - 35°C
Storage temperature	0°C-70°C	-20°C - 70°C
Humidity	20% - 90% non-condensing	20% - 90% non-condensing

Other data

Support 24 x 7 x 365	✓	✓
----------------------	---	---

Centralized perimeter protection against all types of Internet-borne threats

Firewall • VPN • IPS • Anti-malware • Content Filter • Anti-spam • Web filter



Panda
GateDefender Integra

Preventive network protection in a single device

Some 99 percent of threats affecting corporate networks are transmitted across the Internet. This makes the gateway connection a critical point for network security, and therefore protection applied at this point will greatly reduce the scanning and disinfection workload on servers and workstations, heading off problems before they reach the internal network.


On the other hand, computer threats can be divided into two groups: network-level threats (unauthorized connections, intrusions, data theft...) and content-based threats (viruses, worms, spyware, phishing, spam, inappropriate web content...). Network-level protection is easily penetrated by malicious programs, while intrusions and network-level attacks cannot be controlled by traditional antiviruses.

This diversity of possible threats makes it necessary, in order to protect networks adequately, to have different technologies integrated under a single, easy-to-use interface, and which, at the same time, can centralize security in a critical network point such as the Internet connection.


¹ Includes protection against viruses, worms, Trojans, spyware, dialers, jokes, phishing, hacking tools, security risks and threats not yet cataloged in the signature file.

Two models to adapt to different needs

Panda GateDefender Integra 100



Panda GateDefender Integra 300



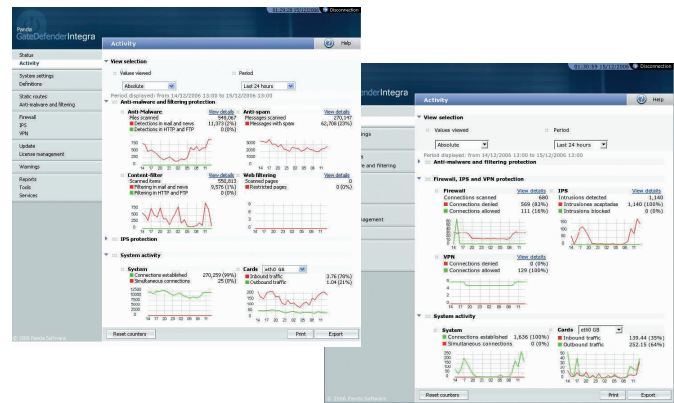
GENERAL BENEFITS:

- Complete protection**
Protects against all network and content-based threats in a single device.
- Optimized resource use**
Prevents unwanted traffic and connections.
- Increased productivity**
Freeing the network from junk mail and preventing access to inappropriate Internet content.
- Total control**
Real-time access to information on protection system activity.
- Hands-off security**
Once configured, the protection updates automatically and requires minimal maintenance.

Panda GateDefender Integra is a unified perimeter security device providing preventive protection in the corporate network perimeter against all types of threats, both network-level and content-based, through a simple, single interface for all the protection.

Firewall	Anti-malware ¹
Intrusion prevention system (IPS)	Content Filter
VPN	Anti-spam
Web filtering	

Also, it allows administrators to monitor the activity of each protection module graphically and intuitively to improve network security.



Protection against network threats

Firewall

Maximizing control

Communication between all network areas, users, groups, etc. is controlled by the firewall system and monitored by the administrator to ensure the best possible network performance.

There are two types of filtering:

1. Static at the network level.
 2. Dynamic at application level.
1. The static filtering at network level is based on rules defined by the administrator for inbound and outbound traffic.
2. Dynamic filtering at application level with 'Stateful Inspection' monitors the status and content of basic communications in all protocols and of advanced communications in FTP, PPTP, L2TP, IPSEC, the status of the connection, timeouts, connections established, etc. It also includes 'Deep Packet Inspection', scanning the content of packets to inspect messages in HTTP, FTP, SMTP, IMAP, POP3, etc., when other modules are enabled.

VPN service

Secure transmissions

The VPN service provides secure communication tunnels with remote users or other offices, adapting perfectly to the current working environment of the company. It allows remote computers to connect to the network across the Internet, with the transferred data encrypted at source and decrypted at destination, preventing it from falling into the wrong hands. This service can operate under host to host, host to net and net to net configurations, with support for IPSec, SSL, L2TP and PPTP protocols, in server mode. In addition, under SLL and IPSec it also operates in client mode.

Intrusion prevention system (IPS)

Reinforced security

This system prevents rapidly spreading external attacks that can slip past traditional antiviruses. It provides signature-based detection of intrusion attempts using an intrusion signature file provided by Panda Software and updated every 90 minutes. The system scans IP, ICMP, TCP and UDP and administrators can configure it to automatically block the intrusions detected and specify the threshold for each rule, thereby reducing false positives.

Protection against content-based threats

Anti-malware

Complete protection

This constantly up-to-date protection blocks all type of malware, including examples that have not yet been catalogued. It offers both proactive and reactive protection against all threats transmitted across the six most widely used Internet protocols (HTTP, FTP, SMTP, POP3, IMAP4 and NNTP). Such threats include: viruses, spyware, Trojans, worms, dialers, jokes, phishing scams, and other threats such as hacking tools or security risks. Thanks to its heuristic scanning capacity it can also block unknown viruses.

Content Filter

Adaptability

The protection can be fully customized by network administrators to adapt to corporate security policy. It filters potentially dangerous content in compressed files, executable files, ActiveX controls, etc., offering separate configuration for email/newsgroup protocols and file transfer/Internet protocols. The administrator can configure the files and types of content as well as text content that must be filtered.

Anti-spam

Clean mail

By preventing junk mail traffic the anti-spam system optimizes network resources, freeing users from time-wasting messages. All inbound messages are checked and classified either as 'spam', 'probable spam' or 'not spam', using multifunctional analysis techniques (Bayesian, heuristic, rules...), blocking junk mail before it reaches users' inboxes or marking the subject of these messages to prevent network users from wasting time.

Web filtering

Increased productivity

The Web filter optimizes employee productivity by blocking access to non work-related Internet content. It allows network administrators to define unproductive content categories and lists of authorized and unauthorized web pages. Administrators can therefore control use of corporate network resources and prevent access to offensive, violent or otherwise inappropriate Web content.