

How to protect the mail service from malware without re-dimensioning service resources

Email is the **main entry-point for malicious code** in companies, putting corporate image at risk, as infections could reach clients, partners and providers. As a result, a layered protection strategy needs to be implemented to combat, in every network component, spyware, viruses, worms, spam, phishing and other Internet threats that can reach the SMTP server.

However, the storage space and bandwidth saved by filtering viruses and junk mail should not complicate administration of the protection or notably increase system response times.

An easy to use and configure antimalware solution is all it takes to get the most out of server resources

Panda Security for Qmail provides complete, real-time protection for all the SMTP traffic in Qmail servers and gateways in your company, preventing resource saturation and propagation of viruses and malicious code across the network.

As well as its advanced heuristic engine, **Panda Security for Qmail** automatically detects and blocks junk mail, reducing bandwidth consumption and interruptions to employees' work. The flexible configuration options in this solution let you rapidly and intuitively include and exclude domains and email addresses from the scan.

Main benefits

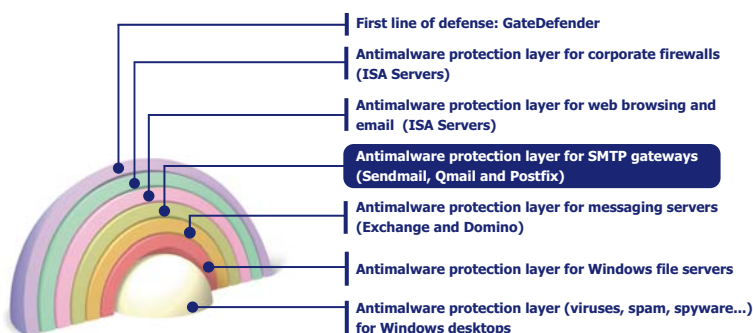
- Its customizable security policies help protect **corporate image**, avoid fines for failure to comply with regulations, prevent industrial espionage, data theft, etc.
- **Boosts** administrator and end-user productivity.
- **Maximizes email communication security**, preventing the spread of infections.

Key features

- **Real-time scanning and disinfection** of all the company's inbound and outbound SMTP traffic.
- **Complete and accurate antis spam protection** - easy to configure and set up.
- **Detects and blocks all types of malicious code**: viruses, worms, Trojans, spyware, hoaxes, phishing scams, dialers, security risks...
- **Flexible configuration** of the protection and of the email domains and accounts to inspect. It also provides a configurable alerts and notifications system.
- **Centralized and remote administration** through a web-based console or with the Windows management and deployment tool AdminSecure.
- **Seamless integration** with the Qmail servers it protects.
- **Optimized performance in Linux gateways** using the most advanced malware scanning technologies.

Layered preventive protection strategy

Panda for Qmail provides SMTP gateway perimeter protection.

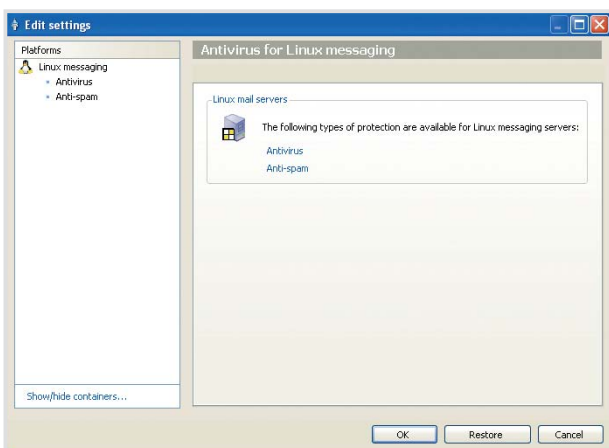


Real-time SMTP traffic scan

Panda for Qmail stands out for its real-time virus scanning of inbound and outbound SMTP traffic. All email communication is fully protected from malware in messages, compressed attachments (at any level), attached or embedded documents and even in the message body itself (text or HTML).

Complete and accurate antispam protection

Panda for Qmail incorporates an advanced antispam engine based on **rules, lists, patterns, Bayesian algorithms and remote learning** in order to optimize the accuracy of the spam classification process, and prevent junk mail reaching users' mailboxes. **Panda for Qmail** detects hoaxes and junk mail that use false NDR messages. It offers several levels of sensitivity and includes senders and domains in white lists and blacklists and identifies spam in the subject of the message to provide unobtrusive security.



Detection and blocking of malware

Panda for Qmail permanently inspects mail for malware: viruses, worms, Trojans, spyware, adware, phishing, dialers, security risks, etc.

The advanced *Genetic Heuristic Engine* (GHE) in **Panda for Qmail** detects new threats and isolates suspicious code. It also automatically requests analysis from Panda in order to disinfect threats and notify the sender or recipient of the message in just a few hours.

Flexible protection settings

Panda for Qmail's flexible configuration adapts to your precise needs, allowing you to configure and select the domains and email addresses to scan or exclude from scanning, and to completely delete infected messages to prevent saturation of mail servers and Denial of Service (DoS) attacks.

Remote, centralized administration

Panda for Qmail can be managed from two administration consoles in order to facilitate installation and monitoring of incidents and updates across the network.

As well as using the traditional web console based in the Apache server, **Panda for Qmail** can now be administered from Windows with **Panda AdminSecure**. This multimedia tool remotely controls the protection level of each mail server and of the rest of Panda's solutions through different view options, graphic reports, warnings, etc. in order to provide a global, real-time view of the protection status of the company.

Complete integration with SMTP servers

New techniques used by malware to spread require perimeter protection which is both 100% reliable and fully compatible with your systems. **Panda for Qmail** integrates perfectly with Linux SMTP gateways, blocking partially sent messages and detecting messages containing vulnerability exploits without degrading performance of the system.

Optimum performance in Linux gateways

The most innovative software development techniques have been applied to this solution to ensure that it provides **maximum and reliable performance** in Qmail servers. This is achieved, in part, through its capacity to scan compressed files in memory instead of having to save them to disk.

Technical requirements

Pentium processor 200 MHz, 64 MB RAM and 90 MB free hard disk space. Operating system to integrate with AdminSecure or independent installation: Red Hat 7.2, 9, Red Hat Enterprise 2.1, 3 AS/ES, Red Hat Enterprise 4 AS/ES, Debian 3.0, 3.1, Mandrake 9.0, 9.1, 10, Mandrake Corporate Server 4.0, Suse 8.1, 8.2, 9.0, 9.1 Professional, 9.2 Professional, Suse 9 Enterprise Server, Suse 10 Enterprise Server.

Web console: Internet Explorer 4.0 (or later), Netscape Navigator 4.6 (or later).

Panda AdminSecure: Pentium III 800 MHz, 512 MB RAM, 512 MB hard disk. Operating systems: Windows NT4 SP6, 2000, XP, Vista 32 & 64 bit, Server 2003.

"We opted for Panda Security for [...] financial reasons. It is easy to manage, saving us a lot of time, which allows us to focus on other daily tasks."

Nico Lautenbach. IT Manager. HOLLAND.

Panda Security Certifications



Powered by:



Remember **Panda Security for Qmail** can be bought separately or as part of **Panda Security for Enterprise**.

Check it now at www.pandasecurity.com
Get your evaluation version of Panda Security for Qmail.

PANDA | **20th Anniversary**
SECURITY | 1990-2010